



ARCSeeker Enterprise Edition

ARCSeeker Enterprise edition is designed for using the Enterprise edition Storage.

The Enterprise edition Storage is a different type of storage from the one made by ARCSeeker Professional edition (*1). This is available in ARCSeeker Enterprise edition only, but not ARCSeeker Professional edition.

*1 As of June 2010, ARCSeeker is available in two editions: Enterprise edition and Professional edition.

Enterprise Edition Storage

Enterprise edition Storage can manage the access rights by user or group. It is possible to assign the access rights like the simple information reference or information edition per user or group by storage/folder/component.

Enterprise Edition Client

Enterprise edition Storage needs Enterprise edition Client.

In addition to the equivalent features (*2) with Professional edition, Enterprise edition Client has the necessary features, such as the user settings for creating/using Enterprise edition Storage and access rights settings, to use Enterprise edition Storage.

*2 The storages for Professional edition cannot be created. Except that, having the license key of Professional edition allows to add a function of storage creation to clients.

License

The Enterprise edition Storage assigns the license key to the storage. One license key is needed for every Enterprise edition Storage created.

There is no limitation to the number of PCs if it has the environment in which the client of Enterprise edition can be installed. Installation is available to anyone or any PCs. The clients do not require the license key entry.

Creating the Enterprise edition Storage

To use the Enterprise edition Storage, follow the below steps.

- Installing the client
- Creating the Enterprise edition Storage
- Registering the storage user
- Setting the storage access rights

Installing the client

Install the Enterprise edition Storage to create a storage.

Creating the Enterprise edition Storage

The Enterprise edition Storage is usually created in the common folder on the network.

Following steps are needed to prepare the environment of storage creation.

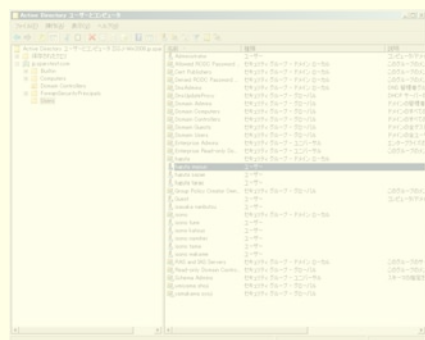
--- The works on the common folder ---

Creating user or group

On the computer where the common folder is created, create a user (administrator) for the storage creation and management (recommended) (*3).

Or create a user or group who uses the storage.

*3 Although it is possible to create a storage by using the existing users on domain, we recommend to create a user for the storage administration since ARCSeeker has the constraints of access rights settings to the added group of the assigned group, and such.



eg: Settings of Active Directory's user and group

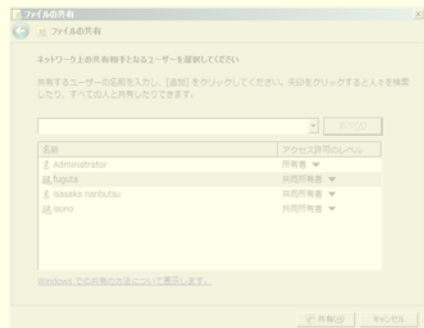
Create a user or group who uses/manages the storage.

Existing users and groups can also create, manage, and use the storage.

Creating a common folder

Create a common folder, which shares storage, on the network.

User or group, who will be an administrator or user, are added to the authorization of the common folder's common access.



[File sharing]

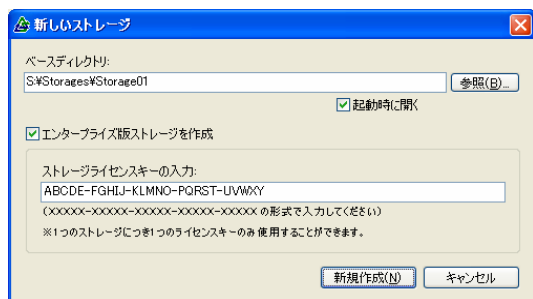
It is to add user or group to whom the common access is authorized.

For the level of access authorization, assign the "owner" or "co-owner."

Creating a storage

To create Enterprise edition Storage, Enterprise edition Client is used.

Run ARCSeeker, and select **File | New Storage** menu item to show the New Storage dialog.



[Creating a new storage]

In the Base Directory field, specify a common folder on the server, and enter the storage license key. Click on the OK button.

If the connection to the domain is not established, the domain connection dialog appears to set the domain connection.



[Connecting to domain]

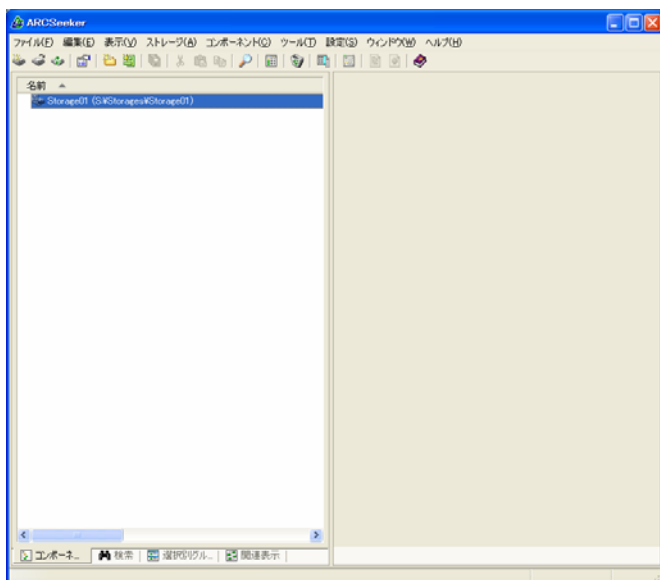
Once the license key authentication succeeds, the storage license terms appear.



[Terms of storage license]

If you agree to the term of the storage license, put a check in the checkbox of "I agree to the terms (A)," and click on the OK button.

New storage will be displayed when the creation of storage is successfully completed.



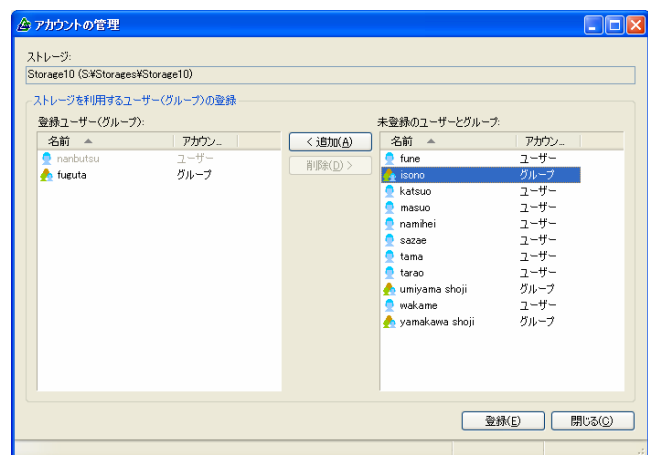
[ARCSeeker] A new storage is created.

Registering user or group to storage

Enterprise edition Storage is available only for the registered users and groups, in which users belong.

The storage users or groups are registered by the account administration dialog.

Execute **Storage | Storage Settings of '***,' ***** is a storage name, to open Storage Settings dialog.



[ARCSeeker Storage Settings] Register user or group to storage

The list on the left defines user or group to be registered to storage.

The user who creates the storage is registered from the beginning.

(It is unable to delete the storage creator.)

The right list shows the defined users and groups (global domain local) on domain. Select the users or groups, and then execute the Add button. The items are moved to the left list.

Set the all users or groups to be registered, and execute the Register button. Users or groups are registered to the storage.

The structure of users or groups, who use the storage, are the same as Windows access rights management. A user can belong to a group or multiple groups. You can set access rights for each user or group.

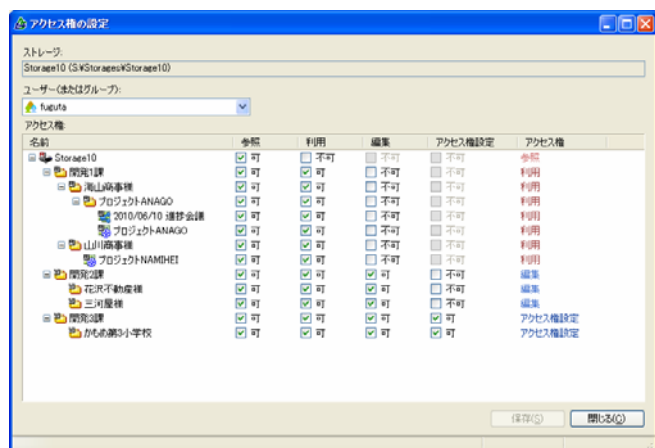
When multiple users are trying to use the storage with the assigned same access right, the users has to be organized in group so that the group needs to be registered in storage for the access rights settings. The actions of the users in that group are based on the assigned access rights to the group.

Setting the access rights

Enterprise edition Storage can set access rights of each user or group to the storages, storage folders, or components.

Access rights settings are available in the access rights setting dialog.

Execute **Storage | Access Rights Settings** to open the account setting dialog.



[ARCSeeker Access Rights Settings] Setting the access rights of storage per user or group

The list on the dialog shows the specified user's access rights to the storages, folders, and components.

The access rights of "Read-only," "Read & Obtain," "Write," and "Access Rights Settings" are set individually to each component and folder.

Check in the box means "Available," and uncheck is "Unavailable."

If "Read-only" access is unavailable, its items are not shown to the user.

(When "Read-only" access is unavailable, the user cannot use the storage.)

"Read-only" access allows the read of storages, folders, and components. Unchecking this access right automatically denies "Read & Obtain," "Write," "Access Rights Settings" access.

When "Read-only" access rights of storages and folders are changed to "Unavailable," you can decide whether the statuses of their children folders and components are all changed to "Unavailable."

When "Read & Obtain" access right is available, you can open files in components.

When "Write" access right is available, you can edit files and properties of components, freely.

When "Access Rights Settings" is available, you can set the access rights of other person for the target components.

When the settings of access rights are completed, click on the **Save** button to save the access rights for each user.

The user creating the storage has all the rights. (It is unable to delete her/him from the account setting.)

It is not allowed to register the group in which the storage creator belongs.

Now the settings to use the Enterprise edition are completed. The setting-based access rights make possible for each user to use her/him components when opening the Enterprise edition Storage.

For the usage and functions of ARCSeeker, please see the help file.